



**GURU**  
KNOWLEDGE IS POWER

**PRODUCT GUIDE**



## WELCOME

Welcome to the second Guru Trade Catalogue. It's safe to say that the new releases contained within are some of the most exciting that we've ever been involved with! The product development team, led by Adam Rooney, has been hard at work, designing products that head consultant Steve Ringer and the other Gurus feel are a real step forward in both innovation and performance.

So, what can you expect in terms of headline releases? Well, cool stuff like the Incredible 'Pult, The MWGB hook, Inline X-Safe leads, Gripper Feeders, Speed Beads, Rod Bands, Line Stops and a whole new range of ready rigs for starters! We intend to add further products to the range soon, and rather than sending you a whole new catalogue, we'll simply send you new pages to add to this one.

Like the catalogue, the Guru team has expanded this year too, with the likes of Pemb Wrighting and Paul Holland adding to the wealth of match fishing experience in a Guru stable that already includes Matchman of the Year Andy Bennett as well as Steve Parry, Mark Griffiths, Andy Pell, James Cooper and Barry Mason. Now that we've assembled such an accomplished team, we've been able to go up through the gears in terms of quality new content for the Guru website. Plus, in an effort to push more customers to your shops, we're regularly uploading exclusive content to the website and the social media platforms, featuring these guys doing what they're best at! Find us at [www.tackleguru.com](http://www.tackleguru.com)

## PLACING AN ORDER

This couldn't be easier! Simply fill in the order form included in this catalogue and scan, email or fax it through to the sales team. (Replacement order forms are sent out with every delivery).

**T:** 0031 4554 70880

**F:** 0031 4554 70889

**E:** [info@korda-eu.com](mailto:info@korda-eu.com)

## DELIVERY

We will endeavour to dispatch your order within 72 hours (subject to your account being up to date).

Credit control is very strict on late payments and this will delay your order being dispatched on time.

Orders are sent via Interlink. Should you wish to track an order please contact our dispatch team.

**T:** 0031 4554 70880

**E:** [info@korda-eu.com](mailto:info@korda-eu.com)

## CARRIAGE-PAID ORDERS

All orders placed over the value of €300,- excluding VAT will be dispatched free of charge. Any orders below this value will incur a surcharge of €15,-. Carriage paid orders may include a mixture of Guru and Korda items.

## POINT OF SALE

Product display boards and other POS material are available. Please speak to your account manager or the Korda sales team.

## TRADE PACKS

Please be aware that most trade packs consist of 6 single items. Cage Feeders are supplied in bags of 15 and the Guru's Guide to Commercial Water Carp Fishing DVD/Booklet, the Fishing Gurus DVD's and all clothing items are sold individually.







## GURU CATAPULT

This is easily the most versatile catapult available today. The Guru 'pult allows incredibly close grouping of various types of feed at a multitude of ranges. The strong elastic runs through the hollow frame of the catapult, allowing the elastics to be tensioned across five different pegging positions along the arms. This allows you to vary the tension in the elastic to hit a variety of ranges with consistency. The elastics themselves are extremely strong and durable. The pouch has been carefully crafted to facilitate this unrivalled accuracy, grouping baits like maggots, casters, pellets and corn extremely tightly. Spare elastics and pouches are also available.

CODE	DESCRIPTION
GCTP1	Guru Catapult
GCTPS	Spare Elastic
GCTPP	Spare Pouch



**NEW  
PRODUCT  
2014/15**

## LIGHT CATAPULT

The Light Catapult is perfect for feeding pellets, maggots and any other small particles. The pouch has been designed for optimum grouping of feed and the elastic can be set to five different tensions for ultimate feeding accuracy. The elastic is strong and low in diameter. Spare elastics and pouches are also available.

CODE	DESCRIPTION
GCTP2	Light Catapult
GCTPLS	Spare Elastic
GCTPL	Spare Pouch



**NEW  
PRODUCT  
2014/15**

## INCREDIBLE 'PULT

The Incredible 'Pult is our dedicated distance catapult. It has been designed to help group your free offerings tightly, even at maximum range, making it perfect for feeding pellets and particles accurately. As you'd expect with a distance 'pult, the elastic is extra strong and durable and the rugged frame has a special, non-twist design to improve accuracy and longevity. The Incredible 'Pult has four pegging points to allow you to adjust the tension of the elastic depending on the range you're fishing. Spare elastics and pouches are also available.

CODE	DESCRIPTION
GIP	Incredible 'Pult
GIPS	Spare Elastics
GIPPS	Spare Pouch





### QM1 - Qty 10

Designed for hair rigging baits on self-hooking setups, this revolutionary hook will dramatically reduce fish loss. The short, swept shank and super-sharp, offset, beaked point offer unrivalled penetration and perfect hook holds.

The PTFE coating prolongs durability, while the large eye allows use with the thicker lines that are associated with modern fishing styles. A range of sizes from 18 up to 10, means there is a QM1 to suit all situations, hook baits and fish.

CODE	DESCRIPTION
<b>GQ10</b>	Size 10
<b>GQ12</b>	Size 12
<b>GQ14</b>	Size 14
<b>GQ16</b>	Size 16
<b>GQ18</b>	Size 18



### LWG - Qty 10

The LWG is a strong, all-round hook that's perfect for feeder or float fishing, especially when tied on knotless-knot style. It features a specially contoured Wasabi point that is both durable and extremely sharp. The carefully considered shape makes the LWG perfect for use with a range of baits, such as pellets, meat, corn or maggots.

CODE	DESCRIPTION
<b>GLWG10</b>	Size 10
<b>GLWG12</b>	Size 12
<b>GLWG14</b>	Size 14
<b>GLWG16</b>	Size 16
<b>GLWG18</b>	Size 18
<b>GLWG20</b>	Size 20



### PELLET WAGGLER - Qty 10

The Pellet Waggler hook has been designed with float hair rigging in mind. As the name suggests, it's particularly suited for use with the pellet waggler, which is so effective on commercial carp waters. The hooks feature an out-turned eye, which ensures that the line exits the eye in a straight line, making for better presentation and greater hooking potential. An extra-long, durable point and wide gape practically guarantees extremely secure hook holds, which will result in more fish in the net.

CODE	DESCRIPTION
<b>GPW10</b>	Size 10
<b>GPW12</b>	Size 12
<b>GPW14</b>	Size 14
<b>GPW16</b>	Size 16
<b>GPW18</b>	Size 18
<b>GPW20</b>	Size 20



### LWGS - Qty 10

This is the spade-end version of the LWG. It shares the versatility of the eyed version and is perfect for pole, feeder or waggler fishing with a range of baits that includes meat, maggots, pellets and corn. It also features the unique Wasabi point and high-strength shape that makes for excellent hooking potential.

CODE	DESCRIPTION
<b>GLWGS10</b>	Size 10
<b>GLWGS12</b>	Size 12
<b>GLWGS14</b>	Size 14
<b>GLWGS16</b>	Size 16
<b>GLWGS18</b>	Size 18
<b>GLWGS20</b>	Size 20





## MWG HOOKS - Qty 10

A super-strong, eyed hook for feeder, waggler and pole fishing. The oversized eye makes it easy to use with thicker lines when targeting bigger-than-average carp.

Ideal for all types of baits including maggots, meat, pellets, boilies and sweetcorn.

CODE	DESCRIPTION
GMW10	Size 10
GMW12	Size 12
GMW14	Size 14
GMW16	Size 16
GMW18	Size 18
GMW20	Size 20



## MWGB HOOKS (MICRO BARBED) - Qty 10

The micro barbed version of the MWG has quickly become a firm favourite with specimen and pleasure anglers, as well as anglers on the European match circuit. It has also been adopted by some of the UK's best specimen hunters, targeting tench and most notably, big barbel. The strongly forged wire and eye-wateringly sharp Wasabi point combine to produce a hook that can be relied on to land that coveted specimen.



CODE	DESCRIPTION
GMWB10	Size 10
GMWB12	Size 12
GMWB14	Size 14
GMWB16	Size 16
GMWB18	Size 18
GMWB20	Size 20



## X-STRONG CARP SPADE - Qty 10

The X-Strong Spade pattern has been designed for hit-and-hold margin fishing on the pole. The extra wide gape and long, durable point result in great hook holds, allowing you to bully large carp, tench or barbel from snags or reeds. The design of the hook makes it perfect for use with large baits like meat and paste. The spade makes it ideal for most conventional pole rigs and ensures that the line exits the hook shank perfectly in line for excellent hooking potential.

CODE	DESCRIPTION
GXS10	Size 10
GXS12	Size 12
GXS14	Size 14
GXS16	Size 16
GXS18	Size 18
GXS20	Size 20







## METHOD & PELLET FEEDERS



### X-SAFE METHOD FEEDERS - Qty 1

A revolutionary advancement in design has brought Guru Method Feeders to the forefront of the market. The unique X-Safe System does away with fixed tether-style elasticated setups to offer all the benefits of elastic in a system as safe as a free-sliding inline. The central platform provides optimum positioning of the hook bait.

Being tapered in design with weight-forward loading, Guru Method Feeders offer any angler increased casting distance. Coloured frames and tubes provide maximum camouflage on the lake bed to fool wary, pressured fish.

CODE	DESCRIPTION	CODE	DESCRIPTION
GSMX	24g	GSMX36	36g
GLMX	28g	GLMX45	45g



### IN-LINE METHOD FEEDERS - Qty 1

Guru's In-Line Feeder system gives you all the benefits of this revolutionary feeder design, without the elastic. Tapered in shape with weight-forward loading, the In-Line Method Feeders fly long and true. Subtly coloured frames and tubes ensure maximum camouflage on the lake bed.

CODE	DESCRIPTION	CODE	DESCRIPTION
GSMI	24g	GSMI36	36g
GLMI	28g	GLMI45	45g

### X-PRESS METHOD MOULD - Qty 1

In order to make the best, most consistent method balls that fly further and truer; the feeder has to be loaded perfectly. Method moulds offer the best way of achieving this. The Guru X-Press Method Mould is a clever device that makes moulding pellets or groundbait around our X-Safe or In-Line feeders child's play. The clever, non-stick inner, coupled with the flexible construction, will ensure that perfectly formed feeders full of bait, drop out into the palm each and every time.

CODE	DESCRIPTION
GMMS	Small
GMML	Large



### X-SAFE PELLET FEEDERS - Qty 1

Designed for use with softened pellets up to 4mm, the Guru Pellet Feeders bring this super-effective tactic within easy reach of every angler. The unique X-Safe System does away with fixed elasticated setups to offer all the benefits of elastic in a system as safe as a free sliding inline.

The tapered shape and weight-forward loading offer greater casting distance whilst the coloured frames and tubes give superb camouflage that blends into the lake bed.

CODE	DESCRIPTION
GSPX	24g
GLPX	28g



### IN-LINE PELLET FEEDERS - Qty 1

Made for use with softened or wetted pellets up to 4mm, the innovative design of Guru Pellet Feeders makes using this effective tactic easy.

With all the benefits of this brilliant feeder design, but without the elastic, the tapered shape and weight-forward loading of the In-Line Pellet Feeders ensure they cast superbly. Like all Guru feeders, the camouflaged frames and tubes provide excellent camouflage for perfect presentation on the lake bed.

CODE	DESCRIPTION
GSPi	24g
GLPi	28g





### IN-LINE X-SAFE LEADS - Qty 2

Guru In-Line X-Safe Leads are the ultimate safe bagging system. They are compatible with X-Safe Stems, which allows the angler to make a speedy switch from In-Line to X-Safe systems.

They also allow you to switch from method feeder or pellet feeder to X-Safe leads instantly. The anti-roll, inline design holds position on sloping lakebeds. The added X-Safe stem improves casting accuracy and distance.

(Long and short X-Safe Stems are sold separately).

CODE	DESCRIPTION	CODE	DESCRIPTION
GIL23	2/3oz	GIL15	1.5oz
GIL11	1.1oz	GIL2	2.oz



### X-SAFE TAIL RUBBERS - Qty 10

These tapered and stepped rubbers are designed for use with the Guru X-Safe elastic system.

CODE
GTX



### X-SAFE STEMS - Qty 2

A unique, fully interchangeable tube system allows you to swap between In-Line and X-Safe (elasticated) large and small feeders. Guru's unique X-Safe System does away with fixed tether-style elasticated setups to offer all the benefits of elastic in a system as safe as a free-sliding inline.

CODE	DESCRIPTION
GSES	Short
GSEL	Long

### IN-LINE TAIL RUBBERS - Qty 10

Guru In-Line Tail Rubbers give a streamlined finish to the end of the tube and also help to prevent the main line from tangling around it.

CODE
GTI





## FEEDERS & SPEEDMESH PVA



**SPEEDMESH**

### SPEEDMESH SYSTEM

A super-fast-melt PVA mesh system designed to be used with a vast array of baits that melts without any residue.

The system comes with an ergonomically shaped scoop-top tube, which ensures easy loading of any bait and a plunger to tightly compact smaller particle baits.

CODE	DESCRIPTION
GSMS	(includes 7m of PVA)

### SPEEDMESH PVA REFILL

A super-fast-melt PVA refill mesh for use with the Speedmesh System. Supplied on a compact 5m spool.

CODE	DESCRIPTION
GSMR	5m Refill



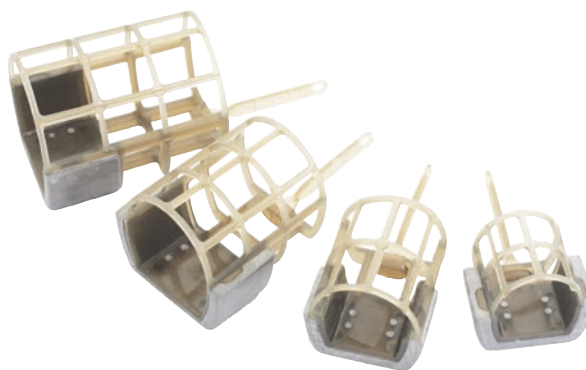
### GRIPPER FEEDERS - Qty 1

With their interchangeable tube system, Guru Gripper Feeders give the angler the choice to fish either inline or with a swivel attachment. They have a unique anti-roll, low-profile design that helps combat fast-flowing rivers and a durable over-mesh to cope with all conditions.

The weight-forward design aids casting accuracy and the increased lead surface area improves stability on the lake or riverbed.

The Guru camo colour also creates a natural camouflage for excellent covert presentation.

CODE	DESCRIPTION
GGFM1	1oz - Medium
GGFM2	2oz - Medium
GGFM3	3oz - Medium
GGFM4	4oz - Medium
GGFL1	1oz - Large
GGFL2	2oz - Large
GGFL3	3oz - Large
GGFL4	4oz - Large



### CAGE FEEDERS

These cage feeders can be used with a variety of baits, including groundbait, pellets, meat, worms and casters. The feeder is created from a durable plastic frame, which is tapered with a weight-forward design for accurate long-range casting. The tapered cage is created with extra long holes for rapid bait release. Specially coloured frames give maximum camouflage on the lake bed to fool wary fish.

CODE	DESCRIPTION	CODE	DESCRIPTION
GCFT	20g - Mini	GCFM	23g - Medium
GCFS	20g - Small	G CFL	23g - Large





### MICRO LEAD CLIP - Qty 10

The design of this lead clip ensures that your feeder or lead can be released from your setup should it become tethered. Not only is this in the interests of fish safety, but Guru Micro Lead Clips prevent tangles and will help you land more fish as a result.



**CODE**  
**GLC**

### SQUARE LEADS - Qty 3

Guru Square Leads are designed for fishing in swims where you're faced with sloping lake beds. The flat sides prevent the lead from rolling. Guru Square Leads are made up from a super-dense material offering more efficient hooking, casting and accuracy.



CODE	DESCRIPTION
GL13	1/3oz
GL23	2/3oz
GL1	1oz

### PEAR LEADS - Qty 3

The Pear Leads have a slightly sleeker profile than the Square Leads. They also have the ability to hold on marginal or island slopes and they are well suited for use on rivers.



CODE	DESCRIPTION
GP13	1/3oz
GP23	2/3oz
GP1	1oz

### PELLET CONES - Qty 1

This pack includes three cones, plus a super-fine baiting needle. Guru Pellet Cones are the ultimate way to present a small, compact pile of feed around your hook bait. This tangle-free presentation is ideal for use with small softened feed pellets as well as groundbait.



CODE	DESCRIPTION
GPC	



### SUPER FINE BAITING NEEDLE - Qty 1

The concealed barb and fine tapered point prevents damage to delicate baits, while the flared handle allows pressure to be applied easily when penetrating harder baits.



CODE	DESCRIPTION
GBN	Red

### SPEEDMESH NEEDLE - Qty 1

Designed for threading hooklengths through PVA bags or sticks. The gate-latch mechanism allows the hooklength loop to be positioned inside the clasp and pulled through PVA sticks.



CODE	DESCRIPTION
GSN	Black

### SPEED STOP NEEDLE - Qty 1

Designed alongside Guru Speed Stops for ultra-quick bait mounting.



CODE	DESCRIPTION
GSSN	Yellow





## TERMINAL SYSTEMS

### MICRO HAIR STOPS

Mixed packs of brown, red and yellow stops allow the angler to match the colour to the chosen hook bait, giving you the edge when targeting wary fish.



CODE	DESCRIPTION
GHS	Yellow, Red, Brown

### BAIT BANDS - Qty 100 approx

Guru Bait Bands allow you to fish hard hook baits with confidence. When attached to a hair rig they enable you to present hard pellets without compromising presentation.



CODE	DESCRIPTION
GBB	

### SIZE 11 RIG SYSTEM SWIVEL - Qty 10

Infinite rolling barrel, extra-tough Rig System Swivel designed to be used in conjunction with the entire Guru range. The anti-corrosion black-nickel-plated finish is incredibly hard wearing.



CODE	DESCRIPTION
GS11	

### SIZE 11 RUNNING RIG SYSTEM - Qty 10

Guru's size-11 large eye swivel is designed to minimise resistance when fishing with running rigs, helping to fool wary and pressured fish. The Quick Change Running Rig offers fast and easy attachment to allow you to alternate feeders and leads while fishing.



CODE	DESCRIPTION
GRR	

### SIZE 11 SNAP LINK & SWIVEL - Qty 10

High-quality size-11 snap links and swivels allow the angler to change feeders or hook links in seconds. Finished with an anti-glare coating.



CODE	DESCRIPTION
GSLS	

### 0.3mm MICRO SILICONE TUBE

Super-fine silicone tubing for enhancing bait presentations when using hair rigs. The 0.3mm internal bore is designed to grip the shank of hooks as small as size 20 to give optimum presentation.



CODE	DESCRIPTION
GST	1.5m - 0.3mm Bore

### BAYONETS - Qty 20

Bayonets make baiting super fast and are ideal for boilies, soft pellets, meat and artificial baits. They are durable and corrosion resistant. The unique design helps grip the bait, and the large eye allows them to be used with heavy lines.



CODE	DESCRIPTION
GBYT	

### SPEED STOPS - Qty 36

Guru Speed Stops cut down baiting time, removing the need for bait stops. The speed stops are tied directly to the hair rig and are of a low diameter, preventing damage to baits. Ideal for drilled pellets, soft pellets, meat, corn, boilies and worms.



CODE	DESCRIPTION
GSS	



## SPEED BEAD - Qty 6

The Guru Speed Bead acts as a shock bead for running rigs and allows you to change your hook lengths instantly. It's safe, easy to use and has a rotating swivel that helps avoid twists and tangles.

Ideal for inline feeders.



### CODE

GSB

## RIG BOX

The Guru Rig Box is the ultimate rig storage solution, holding over 200 rigs. It comes complete with EVA spools and 20 Guru pins. This universal system can be used for feeder, bomb, pellet waggler, pole and float hook lengths, hair rigs, booms, leaders, zigs and chods.



### CODE

GRB

## SPARE EVA SPOOLS - Qty 5

Perfect for storing feeder, bomb, pellet waggler, pole and float hook lengths, hair rigs, booms, leaders, zigs and chods.



### CODE

GRBS

## RIG CASE

The Rig Case has been designed so that the angler can organise and store pre-tied hook lengths of between 3"-6" in the small rig case and 6"-12" in the large. It has a magnetic locking system and water-resistant seal, which ensure that hook lengths are stored in optimum condition.



### CODE DESCRIPTION

GRC	Small
GRCL	Large

## GURU HAND TOWEL

A soft hand towel manufactured in vibrant Guru orange featuring the Guru logo.



### CODE

GHT

## ROD BANDS - Qty 2

Soft, stretchy neoprene bands, which provide protection for your rods in transit. The velcro fastening ensures secure hold with fast release and their bright colour keeps your rods visible in all light conditions. Essential for protecting tackled-up rods.



### CODE

GNRB

## LINE STOPS - Qty 12

Multi-purpose, compact line stops that have a super tight fit on low diameter lines. Ideal for use with feeder and float setups or as back stops.



### CODE DESCRIPTION

GFSS	Small - 5mm
GFSM	Medium - 6mm
GFSL	Large - 7mm

## RIG SCISSORS

Featuring fluorescent coloured handles making them easy to locate in your rig box. Stainless steel blades ensure they'll stand the test for time.



### CODE DESCRIPTION

GRS	Orange
-----	--------





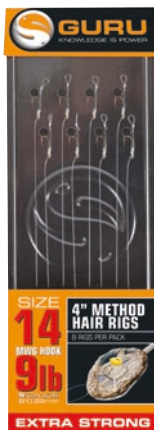
## HOOKLENGTHS & LINE

### DRAG-LINE

Drag-Line is an extra strong, super abrasion resistant monofilament reel line designed to cope with the demands of modern tactics and heavy duty fishing.



CODE	DESCRIPTION	CODE	DESCRIPTION
GDL4	4lb - 0.20mm	GDL8	8lb - 0.28mm
GDL6	6lb - 0.25mm	GDL10	10lb - 0.30mm



### 4" METHOD HAIR RIGS - Qty 8

Each pack contains eight 4" hook lengths ideal for use with a method or pellet feeder.

CODE	DESCRIPTION
GMHR10	Size 10 - MWG hook 12lb N-Gauge
GMHR12	Size 12 - MWG hook 9lb N-Gauge
GMHR14	Size 14 - MWG hook 9lb N-Gauge
GMHR16	Size 16 - MWG hook 7lb N-Gauge

### 15" FEEDER HAIR RIGS

- Qty 8



Each pack contains eight 15" rigs ideal for use with the Pellet Cone, PVA, straight lead or cage feeders. All rigs are made from the finest Guru components.

CODE	DESCRIPTION
GFHR10	Size 10 - MWG hook 12lb N-Gauge
GFHR12	Size 12 - MWG hook 9lb N-Gauge
GFHR14	Size 14 - MWG hook 9lb N-Gauge
GFHR16	Size 16 - MWG hook 7lb N-Gauge

### READY RIGS WITH BAYONETS - Qty 8

Ready Rigs with Bayonets can be used with a variety of baits including soft pellets, drilled pellets, meat, corn and mini boilies.

They're available in 15" versions for pellet waggler fishing (with the Pellet Wagglers hooks) and 4" versions for method fishing (with MWG hooks).



CODE	DESCRIPTION
GRR017	Size 10 - Bayonets - 4"
GRR018	Size 12 - Bayonets - 4"
GRR019	Size 14 - Bayonets - 4"
GRR020	Size 16 - Bayonets - 4"
GRR021	Size 10 - Bayonets - 15"
GRR022	Size 12 - Bayonets - 15"
GRR023	Size 14 - Bayonets - 15"
GRR024	Size 16 - Bayonets - 15"

### N-GAUGE

N-Gauge is a Japanese premium quality extra strong mono, which is accurately rated in diameter and breaking strain. Designed for feeder hooklengths and pole rigs for commercial carp and top level competition fishing.



CODE	DESCRIPTION	CODE	DESCRIPTION
GNG11	3lb 0.11mm	GNG19	7lb 0.19mm
GNG13	4lb 0.13mm	GNG22	9lb 0.22mm
GNG15	5lb 0.15mm	GNG25	12lb 0.25mm
GNG17	6lb 0.17mm		

### READY RIGS WITH SPEED STOPS - Qty 8

Speed Stop Ready Rigs can be used with drilled pellets, hard boilies, meat, corn and worms.

The rigs are available in 15" versions for all round angling and 4" versions for method and feeder fishing.

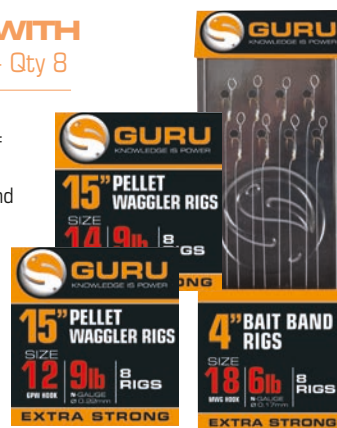


CODE	DESCRIPTION
GRR001	Size 10 - Speedstops - 4"
GRR002	Size 12 - Speedstops - 4"
GRR003	Size 14 - Speedstops - 4"
GRR004	Size 16 - Speedstops - 4"
GRR005	Size 10 - Speedstops - 15"
GRR006	Size 12 - Speedstops - 15"
GRR007	Size 14 - Speedstops - 15"
GRR008	Size 16 - Speedstops - 15"

### READY RIGS WITH BAIT BANDS - Qty 8

Ready Rigs with Bait Bands can be used with a variety of baits including hard pellets, drilled pellets, meat, corn and mini boilies.

They're available in 15" versions for pellet waggler fishing (with the Pellet Wagglers hooks) and 4" versions for method fishing (with MWG hooks).



CODE	DESCRIPTION
GRR009	Size 12 - Bait Bands - 4"
GRR010	Size 14 - Bait Bands - 4"
GRR011	Size 16 - Bait Bands - 4"
GRR012	Size 18 - Bait Bands - 4"
GRR013	Size 12 - Bait Bands - 15"
GRR014	Size 14 - Bait Bands - 15"
GRR015	Size 16 - Bait Bands - 15"
GRR016	Size 18 - Bait Bands - 15"

# HOOKLENGTHS & LINE



## GURU QM1 READY RIGS - Qty 8

The QM1 15" Ready Rigs come pre-tied on colour coded EVA spools that fit straight into the Guru Rig Box. The spool is printed with all the rig's details and provides excellent protection for your precious rigs. Each spool carries 8 high quality pre-tied rigs, which are loaded on to the spool using a unique method, allowing for easy release. The individual colour coding allows you to pick out the right rigs at a glance. This product takes ready tied rigs to a whole new level.



### QM1 BAYONETS

- Qty 8

QM1 ready rigs with Bayonets.

CODE	DESCRIPTION
GRR041	QM1 Size 10 - Bayonets - 4"
GRR042	QM1 Size 12 - Bayonets - 4"
GRR043	QM1 Size 14 - Bayonets - 4"
GRR044	QM1 Size 16 - Bayonets - 4"
GRR045	QM1 Size 10 - Bayonets - 15"
GRR046	QM1 Size 12 - Bayonets - 15"
GRR047	QM1 Size 14 - Bayonets - 15"
GRR048	QM1 Size 16 - Bayonets - 15"

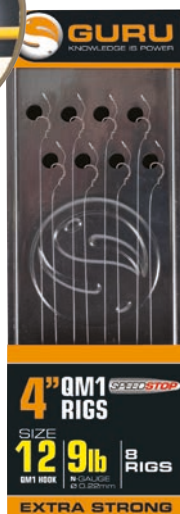


### QM1 SPEEDSTOPS

- Qty 8

QM1 ready rigs with Speed Stops.

CODE	DESCRIPTION
GRR025	QM1 Size 10 - Speedstops - 4"
GRR026	QM1 Size 12 - Speedstops - 4"
GRR027	QM1 Size 14 - Speedstops - 4"
GRR028	QM1 Size 16 - Speedstops - 4"
GRR029	QM1 Size 10 - Speedstops - 15"
GRR030	QM1 Size 12 - Speedstops - 15"
GRR031	QM1 Size 14 - Speedstops - 15"
GRR032	QM1 Size 16 - Speedstops - 15"

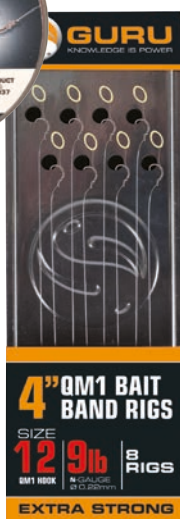


### QM1 BAIT BANDS

- Qty 8

QM1 ready rigs with Bait Bands.

CODE	DESCRIPTION
GRR033	QM1 Size 12 - Bait Bands - 4"
GRR034	QM1 Size 14 - Bait Bands - 4"
GRR035	QM1 Size 16 - Bait Bands - 4"
GRR036	QM1 Size 18 - Bait Bands - 4"
GRR037	QM1 Size 12 - Bait Bands - 15"
GRR038	QM1 Size 14 - Bait Bands - 15"
GRR039	QM1 Size 16 - Bait Bands - 15"
GRR040	QM1 Size 18 - Bait Bands - 15"



SALES: 0031 4554 70880

FAX: 0031 4554 70889

EMAIL: info@korda-eu.com

HOOKLENGTHS & LINE





## DVDS & CLOTHING



### FISHING GURUS ON DVD

Now into its fourth series, Fishing Gurus has set a high bar for coarse fishing on TV. It's presented by respected all-rounder and former Olympic decathlete, Dean Macey, and features an all-star list of guests.

The settings and fishing disciplines are varied, taking in the majesty of the stunning River Wye and its hard-fighting barbel, as well as several well-known commercial match venues and the unique holiday complex, Angler's Paradise. Each show is packed with action, as well as take-home tips from the likes of Steve Ringer, Ali Hamidi, Adam Rooney and David Seaman.

CODE	DESCRIPTION
GDVDS1	Series 1
GDVDS2	Series 2
GDVDS3	Series 3
GDVDS4	Series 4



### GURU'S GUIDE TO COMMERCIAL WATER CARP FISHING

Steve Ringer and Alex Bones are regarded as two of the finest commercial water carp anglers in the country. Until now, their methods and approaches have only been seen in print.

The Guru's Guide to Commercial Carp Water Fishing is a unique and exclusive chance to see these experts in action.

**CODE**  
**GCWB**



### CAPS

Fashionable cap with a large Guru logo embroidered on the side. They are already worn by the likes of Adam Rooney and Steve Ringer.

**CODE**  
**GBC01**





## GURU HOODIES

These active-fit hoodies are made from a heavyweight poly-cotton fleece which provides extreme comfort as well as highly efficient wicking properties.

CODE	DESCRIPTION	CODE	DESCRIPTION
GCL013	Small	GCL016	XL
GCL014	Medium	GCL017	XXL
GCL015	Large	GCL018	XXXL



## GURU T-SHIRTS

Black Guru T-Shirt with a small screen-printed logo on the front and a large one on the reverse.

CODE	DESCRIPTION	CODE	DESCRIPTION
GCL001	Small	GCL004	XL
GCL002	Medium	GCL005	XXL
GCL003	Large	GCL006	XXXL



## GURU GRADIENT T-SHIRTS

This comfortable, fashionably tailored T-shirt features a cool Guru gradient logo on the front and a small Guru logo on the back, as well as subtle detailing on the sleeve.

CODE	DESCRIPTION	CODE	DESCRIPTION
GCL007	Small	GCL010	XL
GCL008	Medium	GCL011	XXL
GCL009	Large	GCL012	XXXL



**GURU**  
KNOWLEDGE IS POWER

**SALES:** 0031 4554 70880 | **FAX:** 0031 4554 70889 | **EMAIL:** [info@korda-eu.com](mailto:info@korda-eu.com)

[WWW.TACKLEGURU.COM](http://WWW.TACKLEGURU.COM)